



[Atc Core Bonding Manually](#)

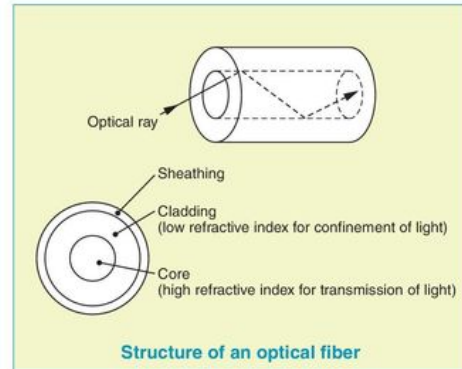
Optical fiber

An optical fiber consists of a core surrounded by a cladding. An optical ray entering the fiber is reflected back at the boundary between the core and the cladding. In this manner, it travels along the length of the fiber.

There are three kinds of optical fiber:

- a) All-plastic fiber (APF)
- b) Plastic-clad silica fiber (PCF)
- c) Silica fiber

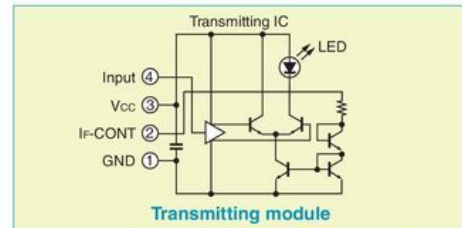
All-plastic fiber, having a plastic core and plastic cladding, is used for short-distance transmission. A plastic-clad silica fiber, which consists of a silica core and plastic cladding, is used for mid-distance transmission. Silica fiber consists of a pure silica core with silica cladding and is used for long-distance transmission. Each optical fiber has a lower transmission loss over a certain wavelength range and is used together with appropriate optical modules.



TOSLINK circuit configurations

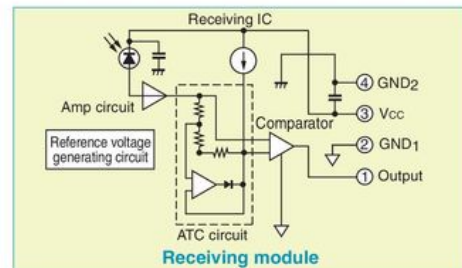
Optical transmission module

The LED is driven by a differential circuit to reduce current transients generated during the on-off switching of the LED so that the LED's switching does not affect peripheral ICs.



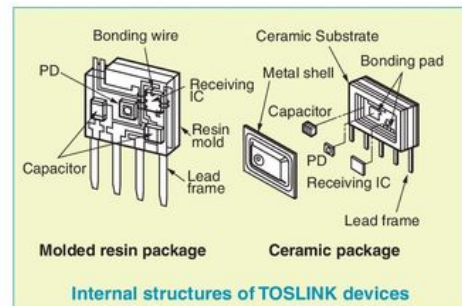
Optical receiving module

The receiving module employs an ATC (automatic threshold control) circuit to reshape the waveform. The ATC circuit controls the comparator reference voltage so that it is always automatically adjusted in accordance with the input optical power. This minimizes pulse width distortion, regardless of the length or bending of the optical fiber.



TOSLINK package constructions

There are two package types available for TOSLINK optical modules. One is a molded resin package for ordinary applications. The other is ceramic, used for applications requiring exceptionally high reliability. The structures of these two packages are shown in the figure on the right. In the molded resin package, devices are mounted on a leadframe and molded with transparent resin. In the ceramic package, devices are mounted on a ceramic substrate and hermetically sealed by a metal shell. The ceramic package provides better resistance against humidity and temperature than the molded resin package.





Download

Markets we serve: Our products are primarily focused on the wireless communications infrastructure, fiber optic, medical electronics, semiconductor manufacturing equipment, defense, aerospace, and satellite communications markets.. Core Bonding PuttyCore Bonding PuttyPrednisolon tabletta Who we are: American Technical Ceramics Corp.. For over fifty years, ATC's family of superior component and custom integrated packaging solutions has been represented by THE ENGINEERS' CHOICE ® brand.

Core Competencies: ATC Core Competencies include: ATC Engineered Materials, Engineered Services, Specialized Testing, Custom Products and Services, TECH-SELECT ® - Proprietary ATC RF Design Software, and Technical support for both our Applications Engineering and Technical Sales Teams.. ATC designs, develops, manufactures, and markets Multilayer Capacitors, Single Layer Capacitors, Resistive Products, Inductors, and Custom Thin Film Products for RF, microwave and millimeter-wave applications.. (ATC) provides component and custom integrated packaging solutions for the RF, microwave and telecommunications industries.

[mac app to open torrent](#)

[Bootrec Exe Rebuildbcd Add Installation](#)

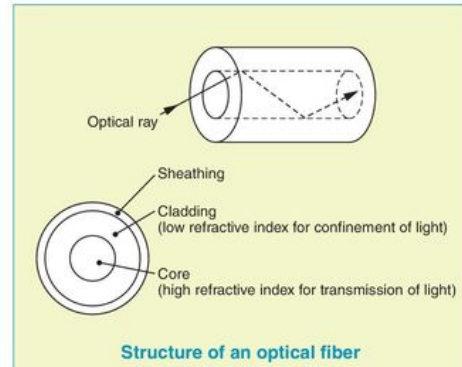
Optical fiber

An optical fiber consists of a core surrounded by a cladding. An optical ray entering the fiber is reflected back at the boundary between the core and the cladding. In this manner, it travels along the length of the fiber.

There are three kinds of optical fiber:

- a) All-plastic fiber (APF)
- b) Plastic-clad silica fiber (PCF)
- c) Silica fiber

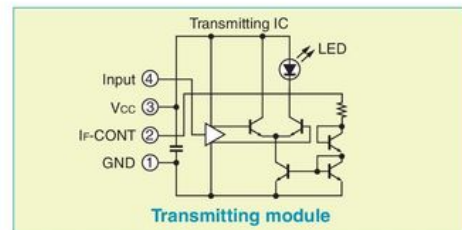
All-plastic fiber, having a plastic core and plastic cladding, is used for short-distance transmission. A plastic-clad silica fiber, which consists of a silica core and plastic cladding, is used for mid-distance transmission. Silica fiber consists of a pure silica core with silica cladding and is used for long-distance transmission. Each optical fiber has a lower transmission loss over a certain wavelength range and is used together with appropriate optical modules.



TOSLINK circuit configurations

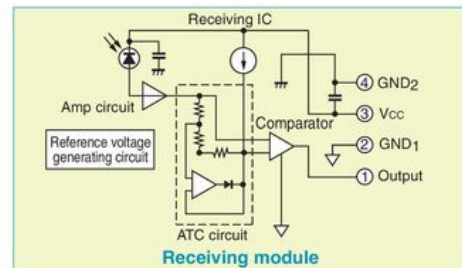
Optical transmission module

The LED is driven by a differential circuit to reduce current transients generated during the on-off switching of the LED so that the LED's switching does not affect peripheral ICs.



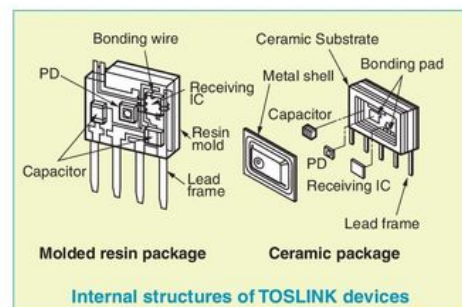
Optical receiving module

The receiving module employs an ATC (automatic threshold control) circuit to reshape the waveform. The ATC circuit controls the comparator reference voltage so that it is always automatically adjusted in accordance with the input optical power. This minimizes pulse width distortion, regardless of the length or bending of the optical fiber.



TOSLINK package constructions

There are two package types available for TOSLINK optical modules. One is a molded resin package for ordinary applications. The other is ceramic, used for applications requiring exceptionally high reliability. The structures of these two packages are shown in the figure on the right. In the molded resin package, devices are mounted on a leadframe and molded with transparent resin. In the ceramic package, devices are mounted on a ceramic substrate and hermetically sealed by a metal shell. The ceramic package provides better resistance against humidity and temperature than the molded resin package.



[Oracle Sql Client For Mac](#)
[.Download full version](#)

[Download video converter for android phone](#)

773a7aa168 [convert pfx to pem for netscaler free download for windows 10 32](#)

773a7aa168

[E-studio 2330c Driver Download](#)